

BBC

BETTER BUSINESS CASES™ (BBC) COURSE



NONSUCH
TRAINING

Learn and become certified with the New Zealand government endorsed approach to business case development with our **BBC** training courses.



BBC Foundation

2-day course
\$2,095 +GST

This course provides a complete understanding of the BBC approach and an internationally recognised qualification through APMG International. Participants can also progress on to Practitioner level at any time, through any registered provider.

Prerequisite: N/A

BBC Practitioner

2-day course
\$2,095 +GST

This course builds on the learnings from the Foundation course. BBC Practitioner is the qualification organisations seek from professional Business Case Practitioners. Useful to those who work in support roles and those reviewing business cases.

Prerequisite: BBC Foundation

BBC Foundation & Practitioner

4-day course
\$3,295 +GST

Complete the 2-day Foundation course and roll straight into the 2-day Practitioner course.

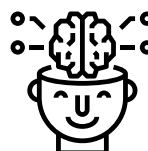
Prerequisite: N/A



EXPERT TRAINERS – Our fully accredited trainers have decades of project management experience across public and private sectors, so material is relevant and best practice.



REAL WORLD APPLICATION – We combine individual, group learning and 'real-life scenarios' to develop practical skills that can be applied in real-world scenarios.



MIXED APPROACH LEARNING – Courses combine theory and practical to provide context and embed learning.

COURSE CONTENT & OUTCOMES

These courses cover the NZ government endorsed approach to business case development and provide a framework to strategise and produce the optimal solution for a business problem. Content aims to build an understanding of:

- BBC concepts such as Spending Objectives, Benefit Types and Benefit Categories.
- The BBC life cycle including the 5 Stages, 10 Steps and 35 Actions.
- The 5 case models (Strategic, Economic, Commercial, Financial and Management) and how these are applied to set up for successful delivery.
- The concept of the Options Framework and how to assess and short list viable options.
- How BBC can be effectively applied to address the needs and problems of a specific project scenario.



CONTACT US

training@nonsuch.co

nonsuch.co/training-courses

Ask us about our next course dates

