

CHANGE MANAGEMENT

FOUNDATION & PRACTITIONER COURSES



Enhance your ability to plan, implement and successfully manage the impact of change on individuals, teams, change leaders, and organisations.



CHANGE MANAGEMENT Foundation

3-day course
\$2,095 +GST

Anyone interested in understanding the approaches to achieving successful organizational change. This can include Change Agents, Team members and Line Managers involved in organizational change

Prerequisite: N/A

CHANGE MANAGEMENT Practitioner

2-day course
\$1,595 +GST

This course builds on the learnings from the Foundation course. Ideal for aspiring or Change Managers

Prerequisite: Foundation

CHANGE MANAGEMENT Foundation & Practitioner

5-day course
\$3,395 +GST

The power combo, providing Foundation and Practitioner learning and qualifications over a five-day period.

Prerequisite: N/A

COURSE CONTENT & OUTCOMES

Based on the Effective Change Manager's Handbook - aligned to the Institute's Change Management Body of Knowledge (CMBok) this course comprehensively covers the practices to be used in organizational change.

A very wide range of practices and techniques are covered in the areas of:

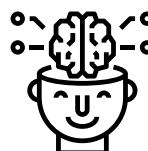
- Change and the individual which covers how people learn, the stages in the learning cycle and what happens as they go through change
- Change and the organization which covers organizational structures, culture and how they respond to change.
- Approaches to achieving organizational change, roles in the change process and how change should be structured
- Approaches to stakeholder engagement
- Establishing change management practices



EXPERT TRAINERS – Our fully accredited trainers have decades of project management experience across public and private sectors, so material is relevant and best practice.



REAL WORLD APPLICATION – We combine individual, group learning and 'real-life scenarios' to develop practical skills that can be applied in real-world scenarios.



MIXED APPROACH LEARNING – Courses combine theory and practical to provide context and embed learning.



CONTACT US

training@nonsuch.co

nonsuch.co/training-courses

Ask us about our next course dates

