

# Managing Benefits™

FOUNDATION & PRACTITIONER COURSES



**Managing Benefits™** consolidates existing guidance on benefits management into one place, maximising return on investment from change.



The reason organisations invest in change is to realise benefits. **Managing Benefits™** consolidates existing guidance on benefits management into a single set of definitive guidance. With this single course you will gain an understanding of the key benefits management approaches.

**Managing Benefits™** expands on the specific practices and techniques aimed at optimising benefits realisation. At the end of the course you will have a full toolbox of techniques and processes aimed at optimising organisational benefits.

## Managing Benefits™ Foundation

2-day course  
\$2,295 +GST

Foundation gives you a complete understanding of the **Managing Benefits™** approach and an internationally recognised qualification. Participants can progress onto Practitioner level at any time.

*Prerequisite: N/A*

## Managing Benefits™ Practitioner

1-day course  
\$1,695 +GST

Practitioner is the qualification most organisations seek from professional Benefits Managers. This qualification is also useful to those who wish to work in benefit definition, delivery, and monitoring roles.

*Prerequisite: Foundation*

## Managing Benefits™ Foundation & Practitioner

3-day course  
\$3,495 +GST

The power combo, providing Foundation and Practitioner learning and qualifications over a three-day period.

*Prerequisite: N/A*



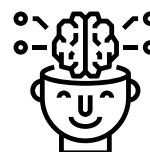
**EXPERT TRAINERS** – Our fully accredited trainers have decades of project management experience across public and private sectors, so material is relevant and best practice.



**OUTCOME-BASED TRAINING** – Students receive pre-course & online course content and ongoing support to facilitate positive exam results.



**REAL WORLD APPLICATION** – We combine individual, group learning and 'real-life scenarios' to develop practical skills that can be applied in real-world scenarios.



**MIXED APPROACH LEARNING** – Courses combine theory and practical to provide context and embed learning.



**CONTACT US**

[training@nonsuch.co](mailto:training@nonsuch.co)

[nonsuch.co/training-courses](http://nonsuch.co/training-courses)

Ask us about our next course dates

